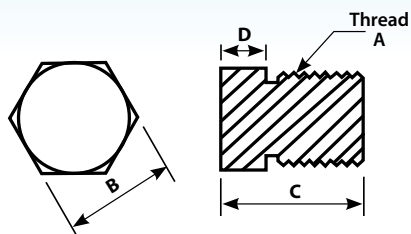


PLUGS

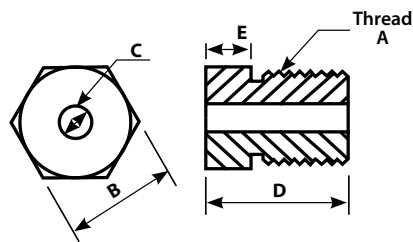
TYPE 1 blank



Melt Bolts p.69

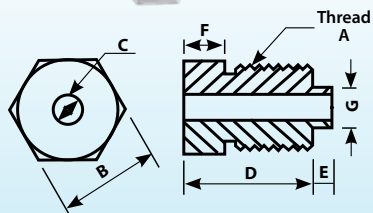
Part No.	Material	A	B	C	D	Price Sterling	Price Euros
Metric Thread							
FS-M16-NA	SS316	M16 x 1.5	22.0	19.0	7.8	£2.50	€3.25
FS-M20-NA	SS316	M20 x 1.5	22.0	20.0	8.0	£3.50	€4.55
FS-M24-NA	SS316	M24 x 1.5	28.0	22.9	8.7	£4.00	€5.20
Imperial Thread							
FS-18-BSP-P-NA	SS316	1/8" BSP	14.2	15.5	5.0	£1.25	€1.63
FS-18-BSP-T-NA	SS316	1/8" BSPT	11.2	16.0	6.3	£1.25	€1.63
FS-18-NPT-T-NA	SS316	1/8" NPT	11.2	16.0	6.3	£1.50	€1.95
FS-14-BSP-P-NA	SS316	1/4" BSP	19.0	20.5	5.5	£1.75	€2.28
FS-14-BSP-T-NA	SS316	1/4" BSPT	14.2	23.8	9.5	£1.75	€2.28
FS-14-NPT-T-NA	SS316	1/4" NPT	14.2	23.8	9.5	£1.75	€2.28
FS-12-BSP-P-NA	SS316	1/2" BSP	24.0	23.5	7.5	£2.90	€3.77
FS-12-BSP-T-NA	SS316	1/2" BSPT	22.0	23.5	7.0	£3.00	€3.90
FS-12-NPT-T-NA	SS316	1/2" NPT	22.0	23.5	7.0	£3.00	€3.90
FS-34-BSP-P-NA	SS316	3/4" BSP	32.0	24.6	8.9	£4.95	€6.44
FS-34-BSP-T-NA	SS316	3/4" BSPT	27.0	26.9	7.8	£4.95	€6.44
FS-34-NPT-T-NA	SS316	3/4" NPT	27.0	26.9	7.8	£4.95	€6.44
FS-1-BSP-P-NA	SS316	1" BSP	41.0	29.2	10.9	£7.95	€10.34
FS-1-BSP-T-NA	SS316	1" BSPT	35.0	35.0	11.2	£7.95	€10.34

TYPE 2 through bore



Part No.	Material	A	B	C	D	E	Price Sterling	Price Euros
Metric Thread								
FS-M24-PLG-6	SS316	M24X1.5	24.0	6.1	22.9	8.7	£24.00	€31.20
Imperial Thread								
FS-38-BSP-PLG-5	SS316	3/8" BSP	19.0	5.1	22.1	7.1	£4.95	€6.44
FS-38-BSP-PLG-6	SS316	3/8" BSP	19.0	6.1	22.1	7.1	£4.95	€6.44
FSP-12-BSPP-PLG-6-303	SS304	1/2" BSP	27.0	6.1	25.5	11.0	£2.50	€3.25
FSP-12-BSPP-PLG-8-303	SS304	1/2" BSP	27.0	8.1	25.5	11.0	£2.50	€3.25
FSP-12-BSPP-PLG-10-303	SS304	1/2" BSP	27.0	10.1	25.5	11.0	£2.50	€3.25
FSP-12-NPT-PLG-6-303	SS304	1/2" NPT	24.0	6.1	35.0	7.0	£2.50	€3.25
FS-12-BSPP-PLG-3	SS316	1/2" BSP	24.0	3.1	23.5	7.5	£3.00	€3.90
FS-12-BSPP-PLG-6	SS316	1/2" BSP	24.0	6.1	23.5	7.5	£3.00	€3.90
FS-12-BSPP-PLG-8	SS316	1/2" BSP	24.0	8.1	23.5	7.5	£3.00	€3.90
FS-12-BSPP-PLG-10	SS316	1/2" BSP	24.0	10.1	23.5	7.5	£3.00	€3.90
FS-12-BSPT-PLG-6	SS316	1/2" BSPT	22.0	6.1	23.5	7.0	£3.00	€3.90
FS-12-NPT-PLG-3	SS316	1/2" NPT	22.0	3.1	23.5	7.0	£3.00	€3.90
FS-12-NPT-PLG-6	SS316	1/2" NPT	22.0	6.1	23.5	7.0	£3.00	€3.90
FS-34-BSP-PLG-12	SS316	3/4" BSP	32.0	12.1	24.6	8.9	£4.95	€6.44

TYPE 3 with weld lip



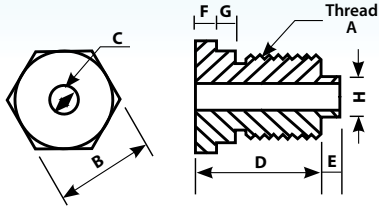
Part No.	Material	A	B	C	D	E	F	G	Price Sterling	Price Euros
FSP-14-BSPP-PLG-6-P	SS304	1/4" BSP	17.0	6.1	11.0	3.0	6.0	8.0	£1.50	€1.95
FSP-12-BSPP-PLG-6-P	SS304	1/2" BSP	24.0	6.1	25.4	3.0	11.2	7.0	£2.15	€2.80
FSP-12-BSPP-PLG-8-P	SS304	1/2" BSP	24.0	8.1	25.4	3.0	11.2	9.0	£2.20	€2.86
FSP-38-BSPT-PLG-8	SS316	3/8" BSPT	17.5	8.1	22.3	3.0	8.1	9.0	£4.95	€6.44
FSP-12-BSPT-PLG-8	SS316	1/2" BSPT	22.0	8.1	30.0	3.2	11.2	9.0	£3.00	€3.90

PLUGS

TYPE 4 with sealing face and weld lip



Part No.	Material	A	B	C	D	E	F	G	H	Price Sterling	Price Euros
FSP-12-BSPP-PLG-6-M	SS304	1/2" BSP	24.0	6.1	6.1	3.0	11.5	3.0	7.1	£2.80	€3.64
FSP-12-BSPP-PLG-8-M	SS304	1/2" BSP	24.0	8.1	8.1	3.0	11.5	3.0	9.0	£2.86	€3.72



Contact our Sales Team for assistance.

Tel: +44(0)118 9730739 Fax: +44(0)118 9737222

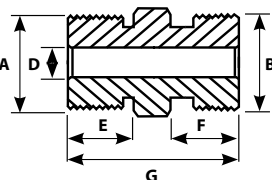
PLEASE NOTE: all dimensions are subject to change without notice and tolerances apply

Nipples

TYPE 1 through bore



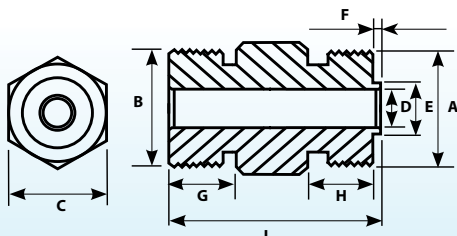
Part No.	Material	A	B	C	D	E	F	G	Price Sterling	Price Euros
FSN-12-BSPP-12-BSPP	SS316	1/2" BSPP	1/2" BSPP	22.2	6.1	19.0	16.0	44.5	£5.95	€7.74
FSN-12P-12P-N-6-303	SS304	1/2" BSPP	1/2" BSPP	24.0	6.1	14.2	14.2	37.0	£3.50	€4.55
FSN-12-BSPP-14-BSPP	SS316	1/2" BSPP	1/4 BSPP	27.0	6.1	14.2	11.2	34.0	£5.95	€7.74
FSN-12-BSPP-18-BSPP	SS316	1/2" BSPP	1/8" BSPP	27.0	6.1	19.0	10.2	36.8	£5.95	€7.74
FSN-12-BSPP-M24	SS316	1/2" BSPP	M24x1.5	25.0	6.1	14.0	14.0	35.0	£5.95	€7.74
FSN-12-BSPP-12-BSPT	SS316	1/2" BSPP	1/2" BSPT	22.2	6.1	19.0	16.0	44.5	£5.95	€7.74
FSN-12-BSPT-12-BSPT	SS316	1/2" BSPT	1/2" BSPT	22.2	6.1	19.0	19.0	45.9	£5.95	€7.74
FSN-12-BSPT-M24	SS316	1/2" BSPT	M24x1.5	25.0	6.1	14.2	19.0	40.2	£5.95	€7.74
FSN-12-NPT-12-NPT-6-303	SS304	1/2" NPT	1/2" NPT	24.0	6.1	19.0	19.0	47.5	£3.50	€4.55
FSN-12-BSPP-12-NPT	SS316	1/2" BSPP	1/2" NPT	22.2	6.1	19.0	16.0	44.5	£5.95	€7.74
FSN-12-NPT-12-NPT	SS316	1/2" NPT	1/2" NPT	22.2	6.1	19.0	19.0	45.9	£5.95	€7.74
FSN-12-BSPP-34-BSPP	SS316	1/2" BSPP	3/4" BSPP	32.0	6.1	19.0	19.0	45.5	£6.50	€8.45
FSN-12-BSPP-34-BSPT	SS316	1/2" BSPP	3/4" BSPT	27.0	6.1	19.0	14.2	41.2	£6.50	€8.45
FSN-M24-M24	SS316	M24x1.5	M24x1.5	25.0	6.1	14.0	14.0	35.0	£6.50	€8.45



TYPE 2 with weld lip



Part No.	Material	A	B	C	D	E	F	G	H	I	Price Sterling	Price Euros
FSN-12P-12P-6-P	SS316	1/2" BSP	1/2" BSP	24.0	6.1	9.0	2.0	16.0	12.0	39.5	£3.50	€4.55
FSN-12P-12P-8-P	SS316	1/2" BSP	1/2" BSP	24.0	8.1	11.0	2.0	16.0	12.0	39.5	£3.50	€4.55



Conversion Table

Inches	1/16"	1/8"	3/16"	1/4"	5/16"	3/8"	7/16"	1/2"	5/8"	3/4"	1"
mm	1.59	3.18	4.76	6.35	7.94	9.53	11.11	12.70	15.88	19.05	25.4

Please Note: All list prices are subject to change. Check website www.temperaturetechnology.com for up to date information