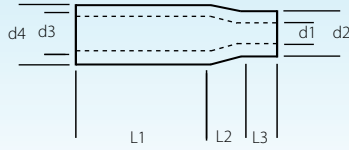


PLAIN POT SEALS

SS303 Pot Seals Plain bodied potting seals to house the transition joints of sensor to extension leads.



Value "d1" indicates probe diameter.

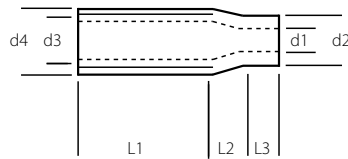
Part No.	Description	Price Sterling	Price Euros
PPS-1.0	1.0mm plain pot seal	£0.65	€0.85
PPS-1.5	1.5mm plain pot seal	£0.60	€0.78
PPS-2.0	2.0mm plain pot seal	£0.60	€0.78
PPS-3.0	3mm plain pot seal	£0.55	€0.72
PPS-4.5	4.5mm plain pot seal	£0.55	€0.72
PPS-6.0	6mm plain pot seal	£0.55	€0.72

d1	d2	d3	d4	L1	L2	L3
1.1	2.1	5	6	15	10	5
1.6	2.6	5	6	15	10	5
2.1	3.1	5	6	19	6	5
3.1	4.1	5	6	19	6	5
4.6	5.6	5	6	19	6	5
6.1	7.1	7	8	20	5	5

Dimensions stated are in mm

THREADED POT SEALS

SS303 Pot Seals 8mm ISO x 1mm pitch threaded potting seals to house the transition joints of sensor to extension leads.



Value "d1" indicates probe diameter.

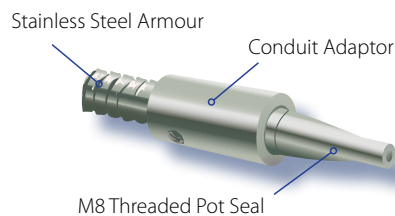
Part No.	Description	Price Sterling	Price Euros
TPS-1.0	1.0 threaded pot seal	£0.85	€1.11
TPS-1.5	1.5 threaded pot seal	£0.80	€1.04
TPS-3.0	3.0 threaded pot seal	£0.80	€1.04
TPS-6.0	6.0 threaded pot seal	£0.80	€1.04

d1	d2	d3	d4	L1	L2	L3
1.1	2.2	6.4	8	13	15	5
1.6	3.2	6.4	8	13	15	5
3.1	4.7	6.4	8	14	9	5
6.1	7.7	6.4	8	15	6	5

Dimensions stated are in mm
Thread length 10mm.

ACCESSORIES

Conduit Adaptor with grub screws



Part No.	Description	Price Sterling	Price Euros
SSA-ADAP	Conduit Adaptor	£0.45	€0.59

Screws onto M8 threaded pot seals to facilitate the extension of flexible stainless steel conduit, secured by grub screws.
Clearance on 7mm to suit maximum 5mm ID armour (and below).

Cable Relief Spring



Part No.	Description	Price Sterling	Price Euros
SSA-SPRING	9.4mm OD x 7.4mm x 37.5mm	£0.35	€0.46
SSA-SPRING-9	9mm 7/16" OD x 0.29"	£0.35	€0.46

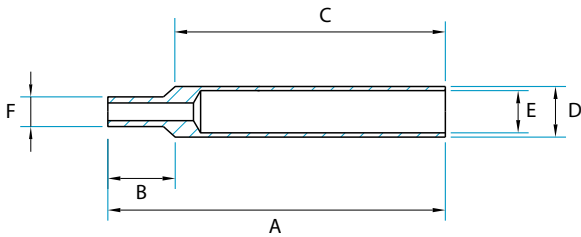
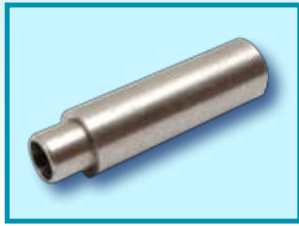
Screws onto M8 threaded pot seals to provide cable strain relief. Can also be used as a bell spring for cable strain relief at the cold end of the sensor sheath.

Please Note: All list prices are subject to change.
Check website www.temperaturetechnology.com for up to date information



MACHINED POT SEALS

Plain Pot Seals SS303



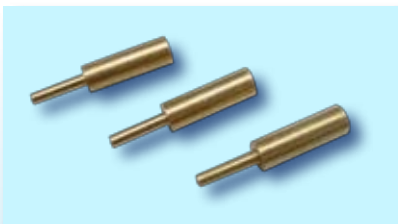
Listed in overall length order

Part No.	To suit Diameter	Dimension (in mm)						Price Sterling	Price Euros
		A	B	C	D	E	F		
PSP-G-01	1.5mm	13	3	10	5	4	4.2	£0.50	€0.65
PSP-A-01	1mm	20	5	15	8	6.9	4.2	£0.50	€0.65
PSP-A-02	1.5mm	20	5	15	8	6.9	4.2	£0.50	€0.65
PSP-A-03	1.5mm	20	6	14	7	5.8	4.3	£0.55	€0.72
PSP-A-04	2mm	20	5	15	8	6.9	3.4	£0.50	€0.65
PSP-A-05	3mm	20	5	15	8	6.9	4.4	£0.50	€0.65
PSP-A-06	3mm	20	6	14	7	5.8	4.3	£0.55	€0.72
PSP-A-07	5.5mm	20	5	15	9	7.6	6.9	£0.50	€0.65
PSP-A-09	4.5mm	20	5	15	9.5	7.5	7.5	£0.55	€0.72
PSP-I-01	6mm	22	10	12	8	6.9	6.2	£0.45	€0.59
PSP-A-08	1.5mm	23	3	20	4	3.5	3	£0.70	€0.91
PSP-H-01	1mm	23	5	18	6.5	5.1	4.2	£0.50	€0.65
PSP-H-02	1.5mm	23	5	18	6.5	5.1	4.2	£0.50	€0.65
PSP-H-03	3mm	23	5	18	6.5	5.1	4.2	£0.50	€0.65
PSP-B-01	1.5mm	25	5	20	6.3	5.8	4.3	£0.50	€0.65
PSP-B-02	3mm	25	5	20	6.3	5.8	4.3	£0.50	€0.65
PSP-B-03	4.5mm	25	5	20	9	7.6	5.9	£0.50	€0.65
PSP-B-04	6mm	25	5	20	10	7.2	7.4	£0.50	€0.65
PSP-B-05	2mm	25	10	15	7	5.5	4.3	£0.85	€1.11
PSP-C-01	1.5mm	30	5	25	6	5	4.2	£0.55	€0.72
PSP-C-02	3mm	30	5	25	6	5	4.2	£0.55	€0.72
PSP-C-03	4.5mm	30	5	25	8	6.9	5.9	£0.55	€0.72
PSP-C-04	6mm	30	5	25	9.5	8	8	£0.75	€0.98
PSP-C-05	6mm	30	5	25	12	7.6	7.4	£0.55	€0.72
PSP-C-06	1mm	30	5	25	6	5	3	£0.55	€0.72
PSP-C-07	0.5mm	30	6	24	7	5	3	£0.80	€1.04
PSP-C-09	2mm	30	5	25	6	5	4	£0.70	€0.91
PSP-C-08	6mm	31	6	25	12	9.5	8	£0.70	€0.91
PSP-D-01	3mm	35	10	25	9.5	8	4.3	£0.70	€0.91
PSP-D-02	1.5mm	35	10	25	9.5	8	4.3	£0.70	€0.91
PSP-E-01	1/4"	40	n/a	40	8	6.5	n/a	£0.70	€0.91
PSP-F-01	1mm	45	5	40	6.3	5.5	3.0	£0.75	€0.98
PSP-F-02	1.5mm	45	5	40	6.3	5.5	3.0	£0.75	€0.98
PSP-F-03	1.5mm	45	5	40	8	7	3.0	£0.75	€0.98
PSP-F-04	3mm	45	5	40	6.3	5.5	4.5	£0.75	€0.98
PSP-F-05	3mm	45	5	40	8	7	5.0	£0.75	€0.98
PSP-F-06	3/16"	45	5	40	6.3	5.5	6.0	£0.75	€0.98
PSP-F-07	3/16"	45	5	40	11	9	6.5	£0.95	€1.24
PSP-F-08	1/4"	45	5	40	11	9	8.0	£0.85	€1.11



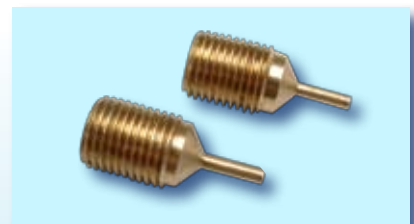
Epoxy Resin

also available, please contact our sales team for further information:
sales@temperaturetechnology.com
+44 (0)1189 730 739



Brass Pot Seals

Contact TTL for pricing and availability.

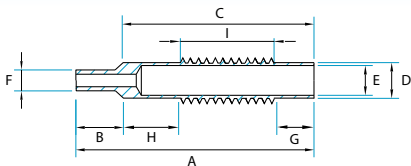


MACHINED POT SEALS

Threaded Pot Seals



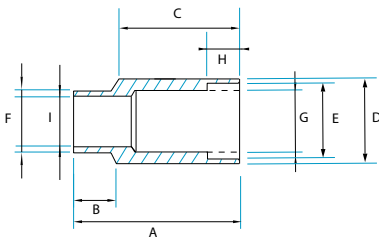
Part No.	To Suit Diameter	Dimension (in mm)									Thread	Price Sterling	Price Euros
		A	B	C	D	E	F	G	H	I			
PST-A-01	1.5mm	19	3.5	15.5	6.4	5.4	4.3	3	3	9.5	M8x1	£0.75	€0.98
PST-A-02	3mm	19	3.5	16	6.4	5.4	4.3	3	3	9.5	M8x1	£0.75	€0.98
PST-A-03	1mm	19	3.5	15.5	6.4	5.4	4.3	3	3	9.5	M8x1	£0.80	€1.04
PST-A-04	0.5mm	19	3.5	15.5	6.4	5.4	4.3	3	3	9.5	M8x1	£0.85	€1.11
PST-B-01	3mm	48	10	38	8.2	7.3	4.2	5	5	28	1/8" BSPP	£0.95	€1.24
PST-C-01	1.5mm	50	12	38	8.2	7.8	3	5	5	28	1/8" BSPP	£1.25	€1.63
PST-D-01	1mm	40	12	28	8.2	7.8	3	5	5	28	1/8" BSPP	£1.40	€1.82



Plain Pot Seals For Armour



Part No.	To Suit Diameter	Dimension (in mm)									Price Sterling	Price Euros
		A	B	C	D	E	F	G	H	I		
PSA-A-01	6mm	16.5	6.5	10	12	11	8	9.5	3	6	£0.75	€0.98
PSA-B-01	3mm	40	10	30	3/8"	7	4.2	6.5	10	3	£0.90	€1.17
PSA-B-02	4.5mm	40	10	30	3/8"	7	6	6.5	10	4.6	£0.90	€1.17
PSA-B-03	6mm	40	10	30	3/8"	7	7.45	6.5	10	6	£0.90	€1.17
PSA-B-04	1.5mm	40	10	30	3/8"	7	3	6.5	10	1.5	£0.90	€1.17



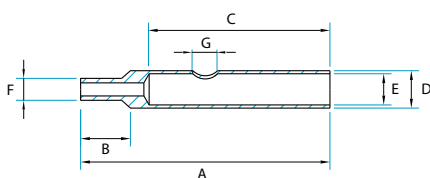
Please Note

Discounts can be given off all list prices dependent upon quantity.

Side Fill Pot Seals (hole to allow side filling of potting material)



Part No.	To Suit Diameter	Dimension (in mm)							Price Sterling	Price Euros
		A	B	C	D	E	F	G		
PSH-01	1.0mm	40	10	30	5.5	4.5	2.5	4	£1.30	€1.69
PSH-02	1.5mm	40	10	30	5.5	4.5	3	4	£1.30	€1.69
PSH-03	1.5mm	40	8	29	6	5	3.3	4	£1.00	€1.30
PSH-04	2.0mm	40	8	29	6	5	3.5	4	£0.90	€1.17
PSH-05	2.0mm	40	10	30	5.5	4.5	3.5	4	£1.10	€1.43
PSH-06	3.0mm	40	8	29	6	5	4.3	4	£0.90	€1.17
PSH-07	3.0mm	40	10	30	5.5	4.5	4.5	4	£1.05	€1.37
PSH-08	4.5mm	40	10	30	5.5	4.7	5.5	4	£1.05	€1.37
PSH-09	6.0mm	52	22	30	8	6.5	5.5	5	£1.20	€1.56



Contact our Sales Team for assistance.

Tel: +44(0)118 9730739 Fax: +44(0)118 9737222

YOUR OWN PRIVATE MACHINE SHOP

TTL CAN MAKE AND STOCK CUSTOM PARTS FOR YOU (SEE PAGE 43).

CONTACT OUR SALES TEAM FOR A QUOTATION